

LINEARITY WORKSHEET - 4 POINTS

Analyte:
Internal Std:

Chemist:
Date:

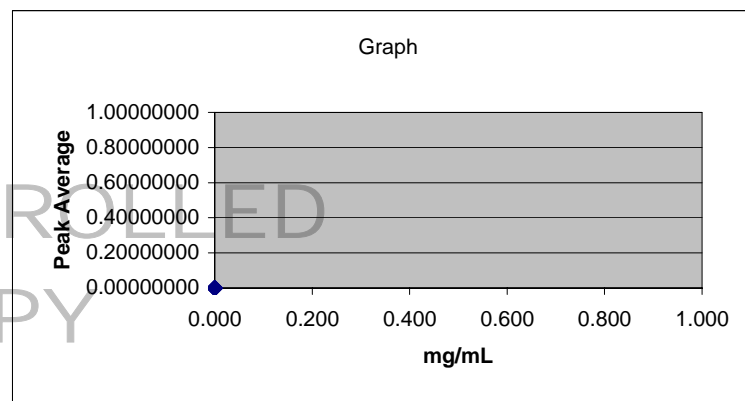
Data Table

Std (mg/mL)	Run #1 Peak Area (Analyte)	Run #1 Peak Area (Internal Std)	Run #2 Peak Area (Analyte)	Run #2 Peak Area (Internal Std)	Run #3 Peak Area (Analyte)	Run #3 Peak Area (Internal Std)

AVG R
#DIV/0!
#DIV/0!
#DIV/0!
#DIV/0!

Slope **Intercept** **R square** **Standard Error**
#DIV/0! #DIV/0! #DIV/0! #DIV/0!

Std (mg/mL)	Accuracy Rel.% error	Precision Coef.Var.%	Calculated Value (mg/ml)
0.000	#DIV/0!	#DIV/0!	#DIV/0!
0.000	#DIV/0!	#DIV/0!	#DIV/0!
0.000	#DIV/0!	#DIV/0!	#DIV/0!
0.000	#DIV/0!	#DIV/0!	#DIV/0!



RSD = Relative Standard Deviation
Std = Standard
Conc. = Concentration